



**JAPAN: THE AWAKENING**



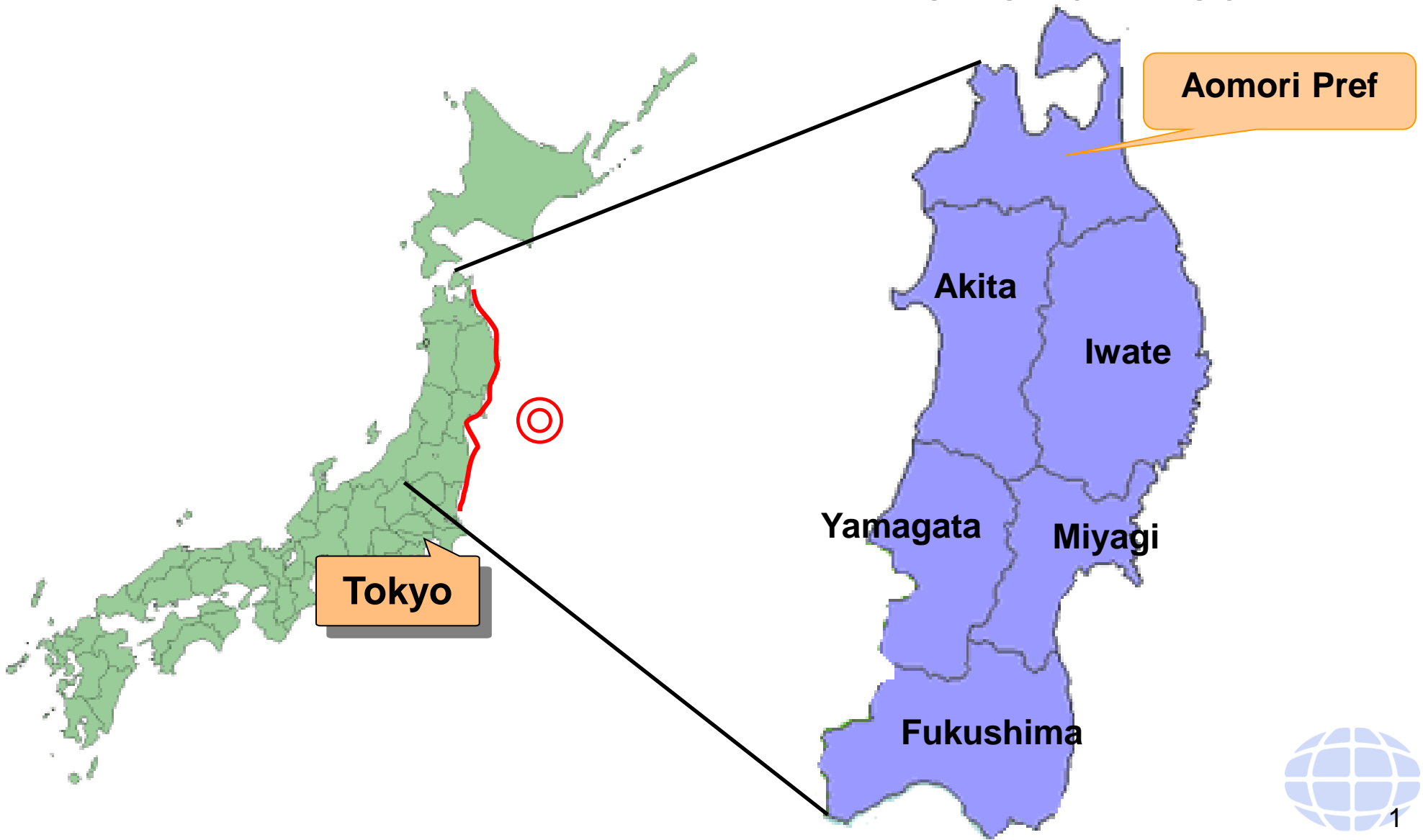
# **Tohoku is Back**



**Yasuhiko Tanabe**  
Director, CLAIR SYDNEY

# Where is Tohoku?

## Tohoku Area

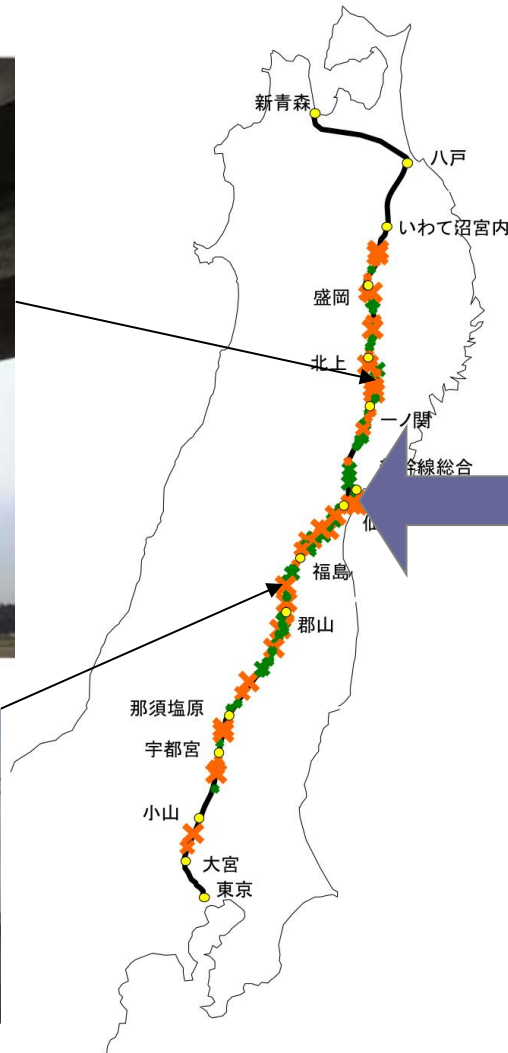
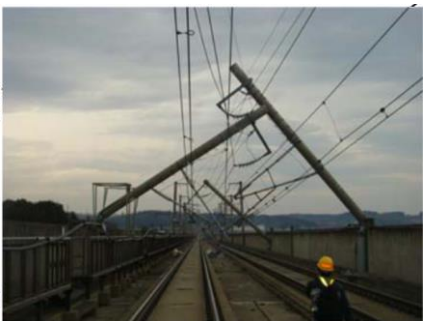


# Tohoku never gives up



# Astounding recovery

## Damages to the Tohoku bullet train infrastructure



# Astounding recovery

Restart of Tohoku Bullet Train, April 2011



# Astounding recovery

Hirosaki Cherry Blossom Festival, April 2011



# Astounding recovery

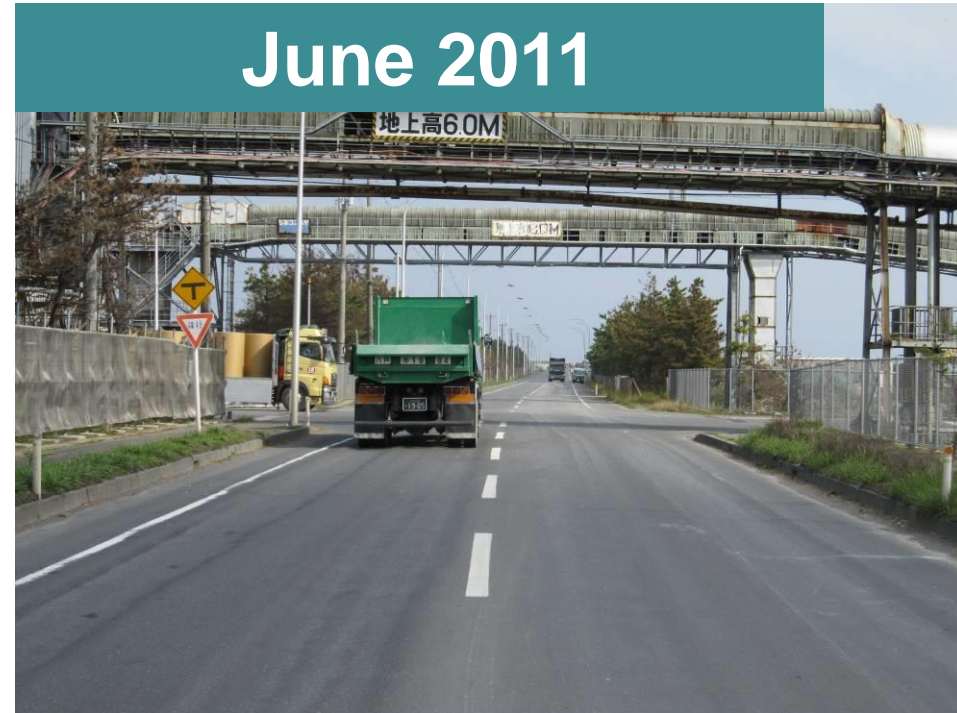
## Infrastructure

### • Road

March 2011



June 2011



# Astounding recovery

## Infrastructure

- Road

March 2011



June 2011





# Astounding recovery

## Infrastructure

- Port facilities

March 2011



May 2011



# Astounding recovery

## Infrastructure

- Fishing ports

March 2011



March 2012



# Astounding recovery

## Economic

- Paper mill facility

March 2011



November 2011



# Astounding recovery

## Economic

- Fish processing industry

March 2011



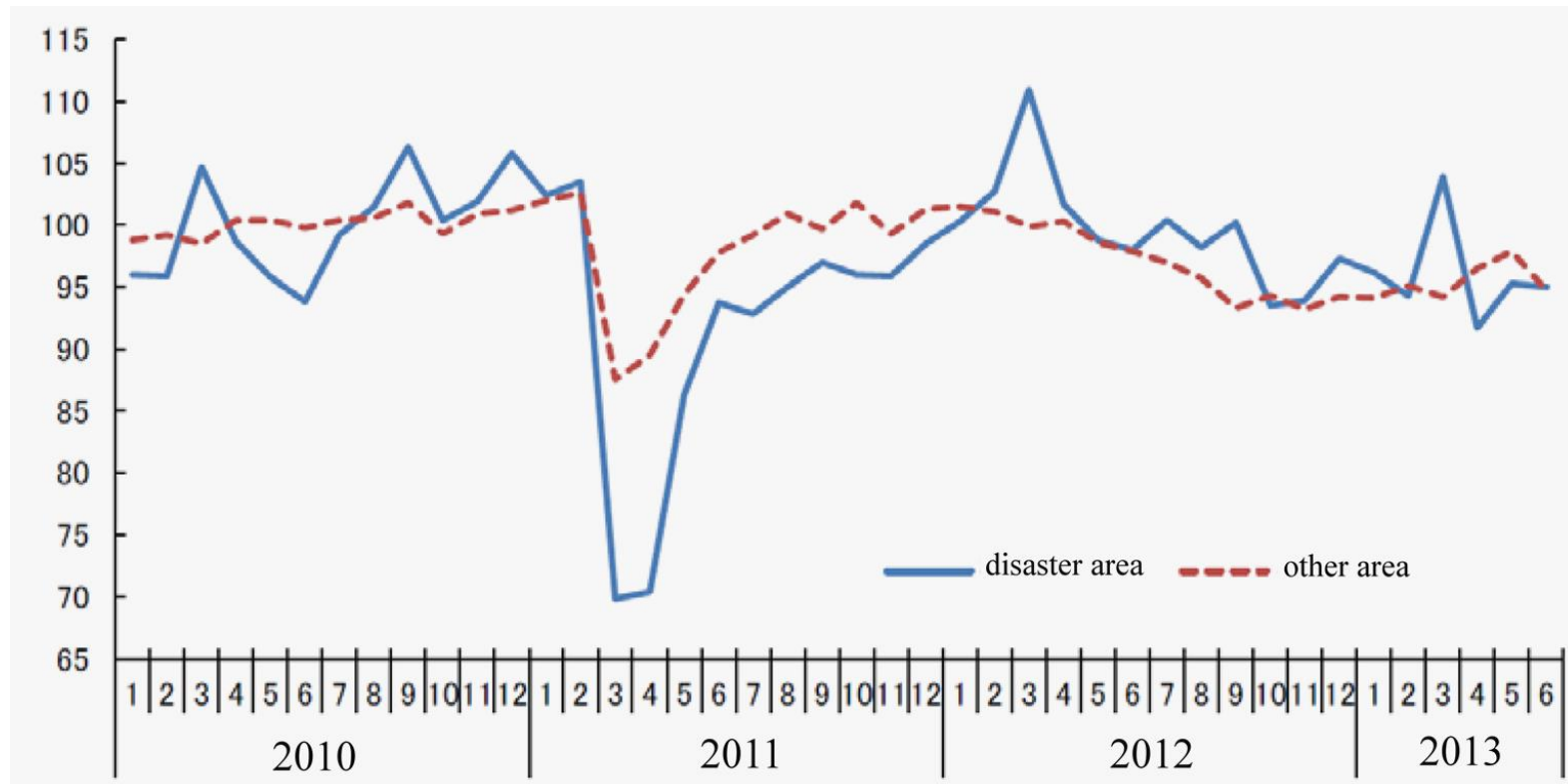
March 2012



# Recovery of the Tohoku manufacturing sector

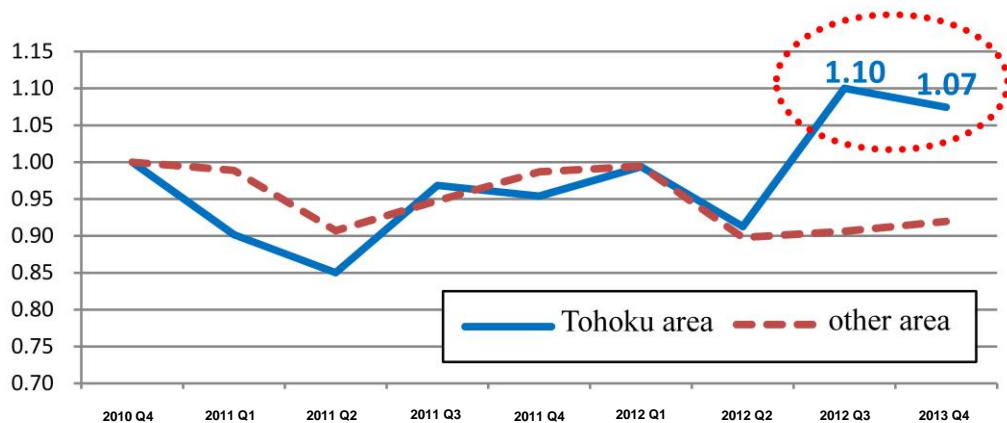
## Production index for the manufacturing industry in and out of the disaster area

(2010 = 100)

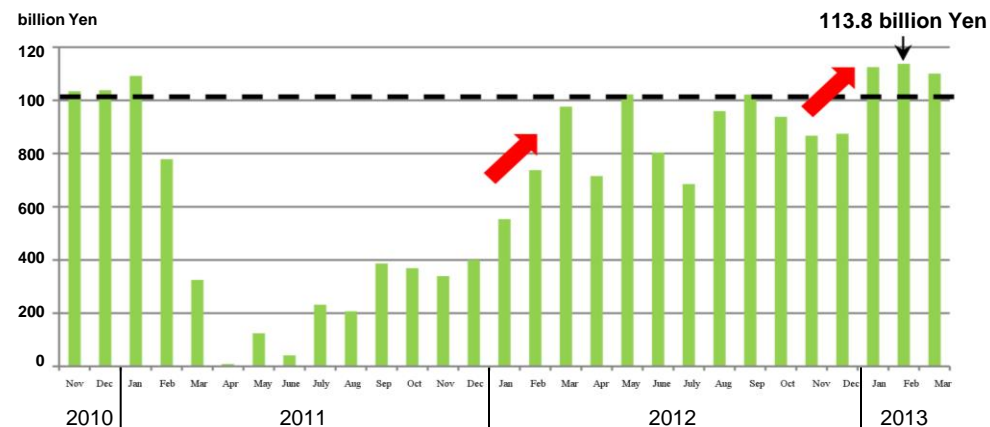


# Economic data on the Tohoku region

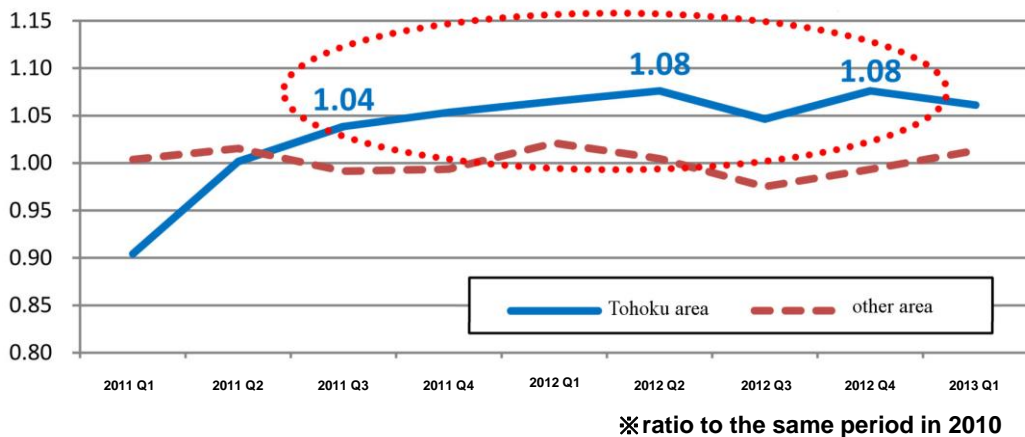
## ① sales volume index



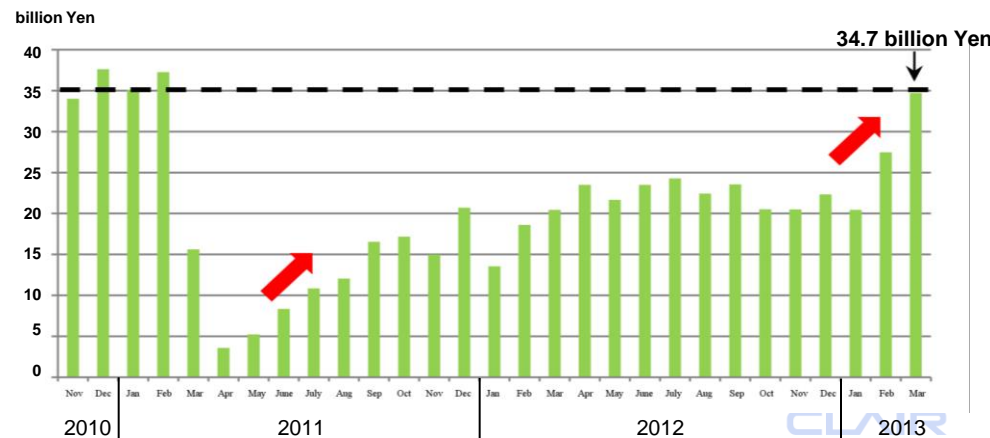
## ③ imports



## ② retail sales volume index



## ④ exports



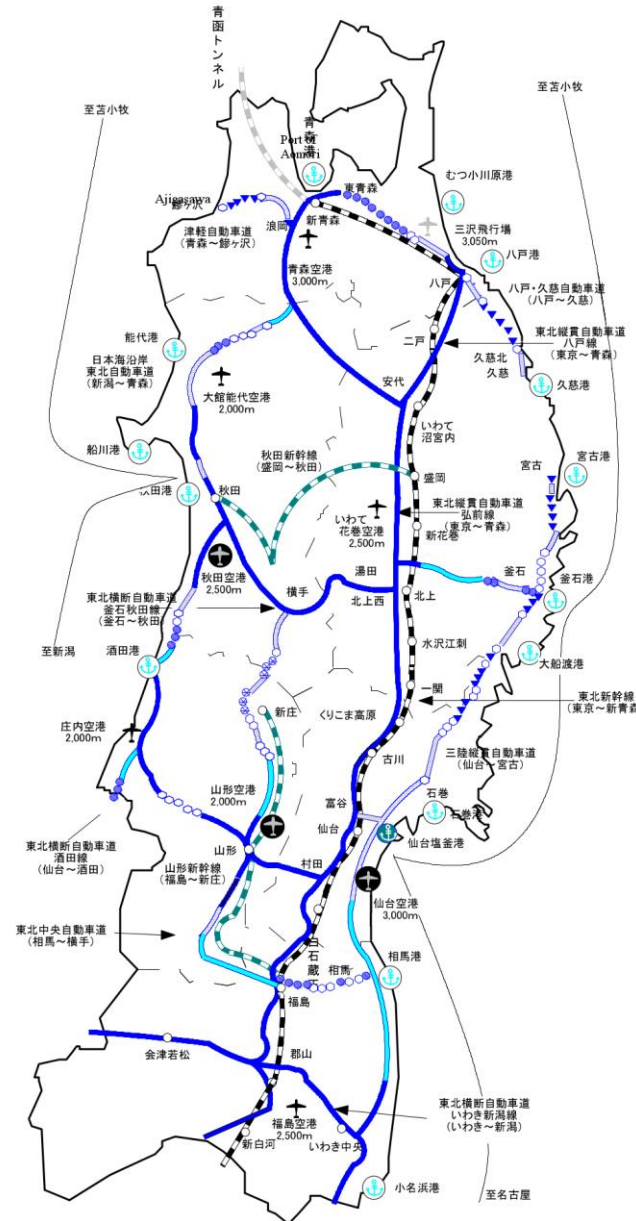
# Why invest in Tohoku?

- Skilled and educated workforce
- Cost competitiveness
- Investment incentives
- R&D and Innovation
- Infrastructure network

# Tohoku transportation infrastructure

## Legend

bullet train	
	operating lines
	trackworks
express way	
	operational roads
	under construction
	planned expansion
	proposed expansion
highway	
	operational roads
	construction
	planned expansion
airport	
	major airport
	local airport
	military airport
harbour	
	significant port
	international port
sea route	
	long distance ferry



※ map correct as of 1 April 2012



# Recovery Plan

- After the disaster, each prefecture made a recovery plan
- Long term vision for more resilient and creative recovery
- Through the disaster, we learned the strong points of the Tohoku region
- Developing the strong points for stronger economy

## Miyagi Prefecture Earthquake Disaster Recovery Plan

from Recovery to Prosperity

The bond between Miyagi, Tohoku and Japan

Musubimaru

(Tourist PR character of Miyagi prefecture)



MIYAGI

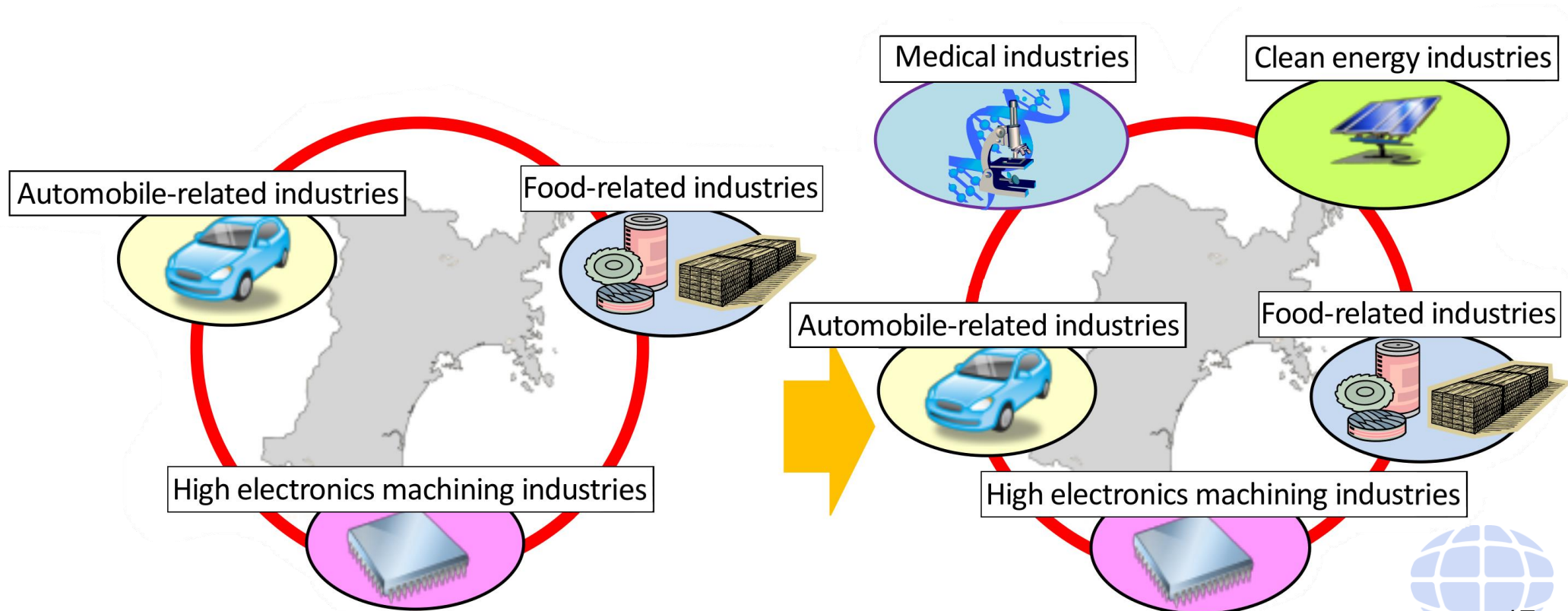
Towards recovery!  
Never give up!

October 2011

Miyagi Prefectural Government

# Miyagi Prefecture

Realising a prosperous Miyagi by promptly rebuilding and diversifying the manufacturing industry



# Why Miyagi?

Tohoku University's World Leading  
R&D and Innovation



*“Our strong connection with Tohoku University provided access to challenging new areas, advanced technology and a strong network of qualified, educated people. Without the people at Tohoku University, the success of the company would not have been possible. In fact about 25 percent of our staff are Tohoku University graduates.”*

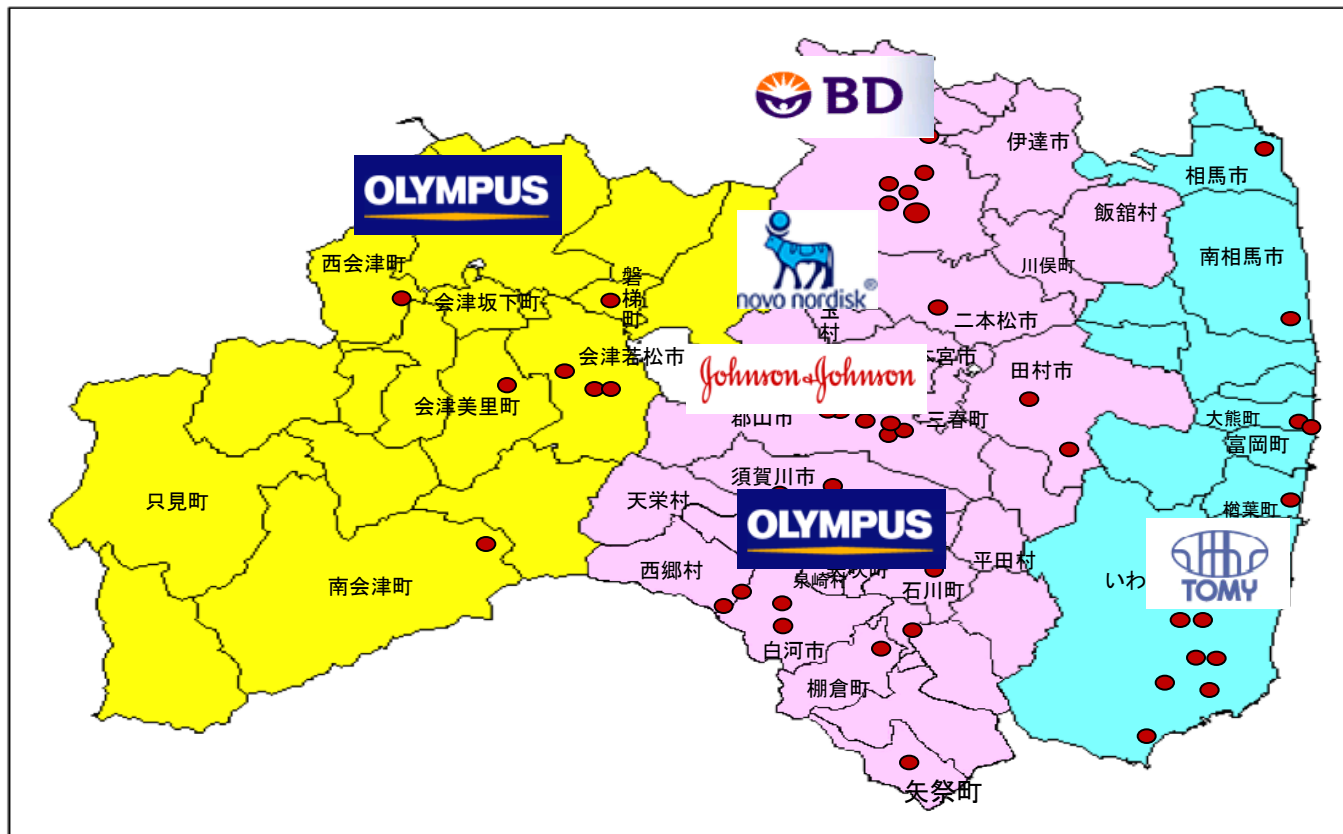
**Glenn Mansfield Keeni**  
**President Cyber Solutions Inc.**



# Fukushima Prefecture

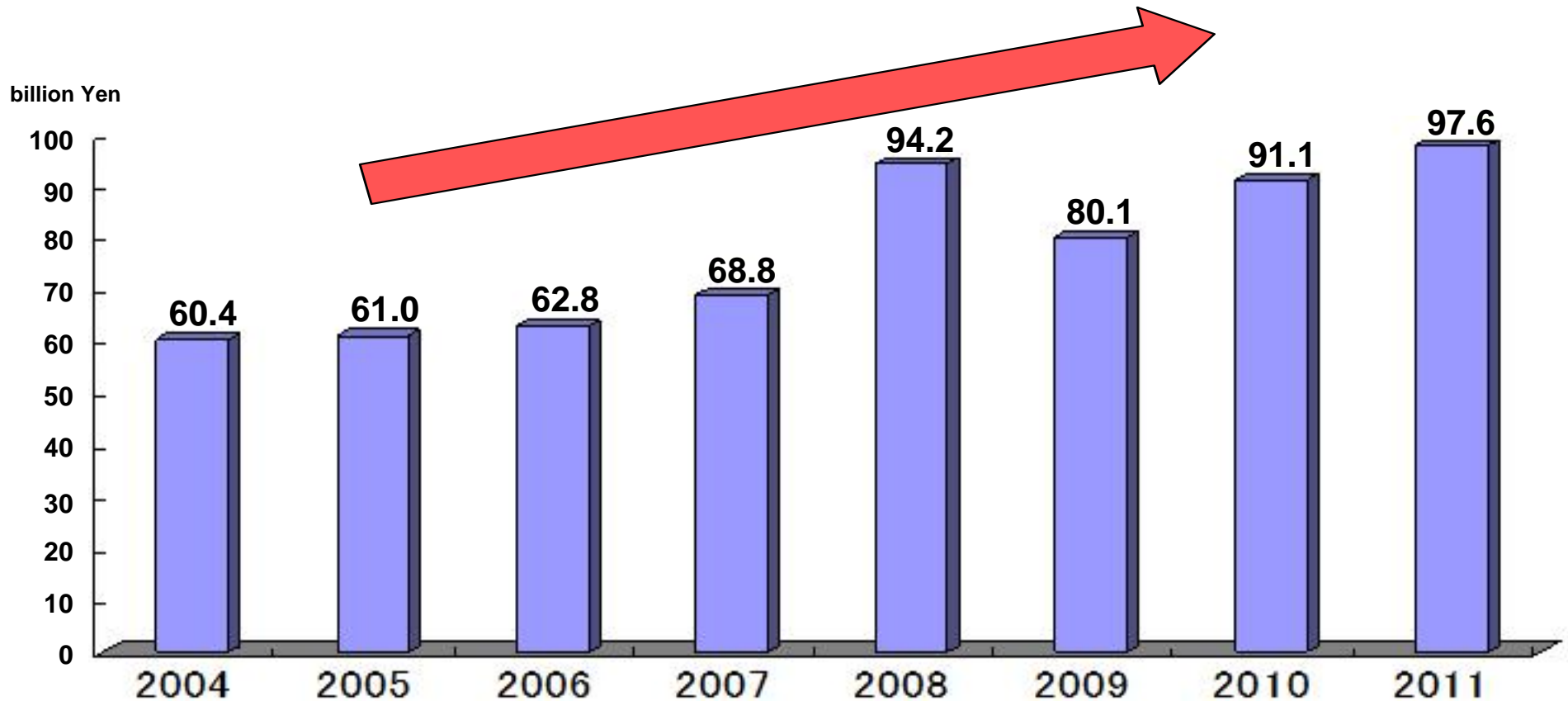
## Agglomeration of medical device manufacturers in Fukushima

Fukushima is home to 54 medical device manufacturers, including Olympus and its endoscope production base.



# Fukushima Prefecture

Japan's prominent producer of medical devices and parts



Output of medical devices in 2011 – 97.6 billion Yen – **FIFTH** in the country

Output of components for medical devices in 2010 – 12.4 billion Yen – **FIRST** in the country



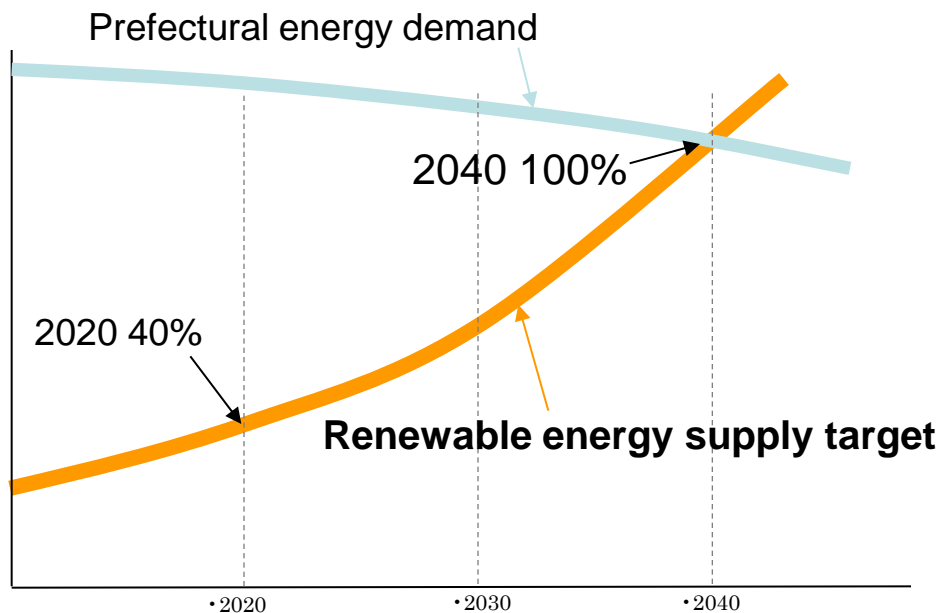
# Agglomeration of medical related industries project

## New challenge after the disaster

- Establishing the Fukushima Medical Device Development Centre
- Funding developments of health devices
- Grants in aid for developing internationally advanced medical equipments
- Aiding the Fukushima medicinal products and related industries



# Renewable energy in Fukushima



Fukushima renewable energy research centre



Fukushima airport mega solar park

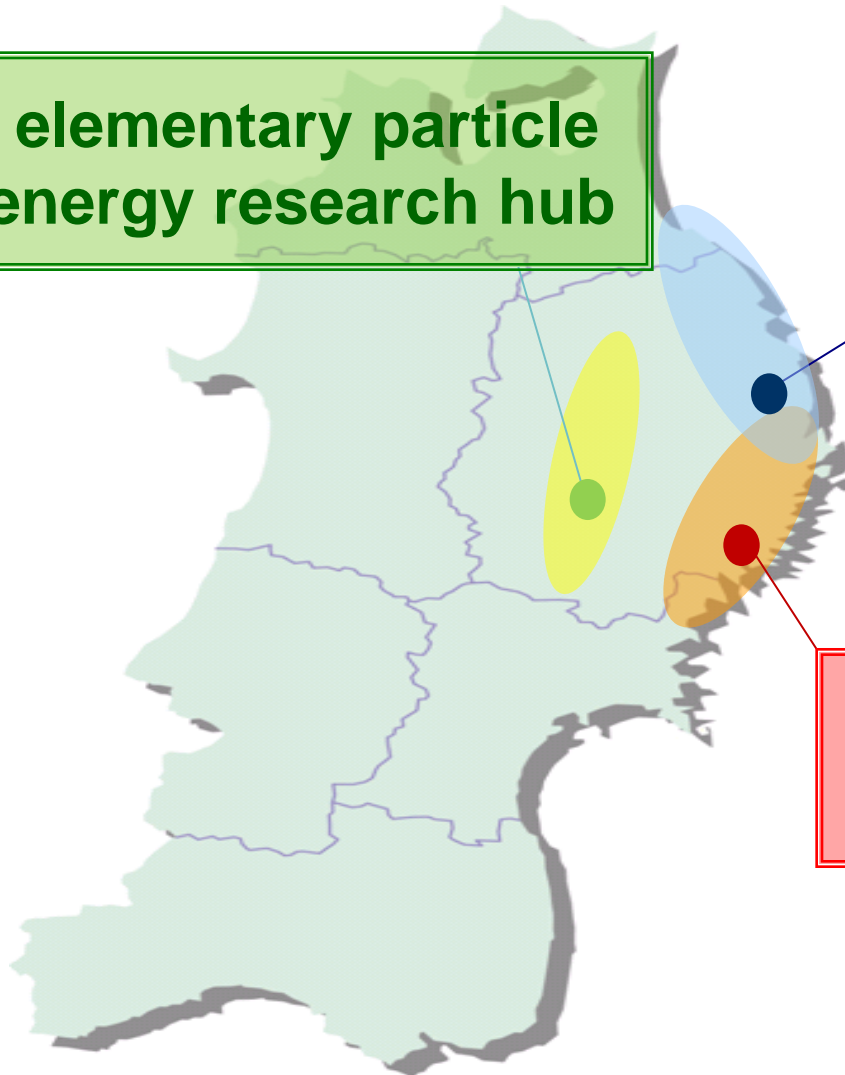
# Iwate prefecture

## International research exchange hub creation project

**International elementary particle physics and energy research hub**

**International ocean research hub**

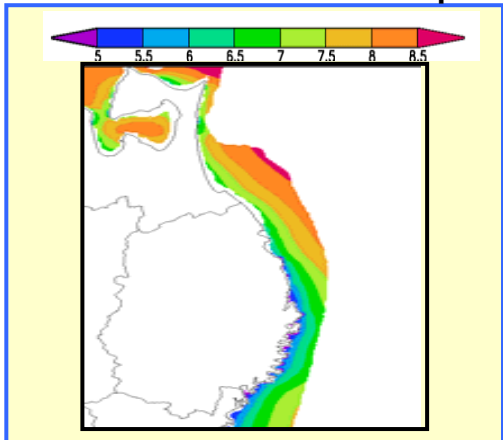
**International disaster prevention research hub**





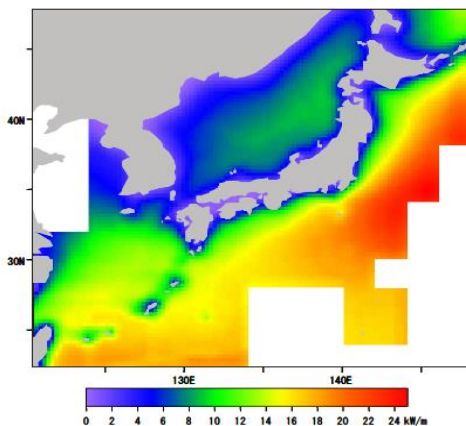
# Introduction of coastal renewable energy

Iwate Prefecture's coastal wind resource map

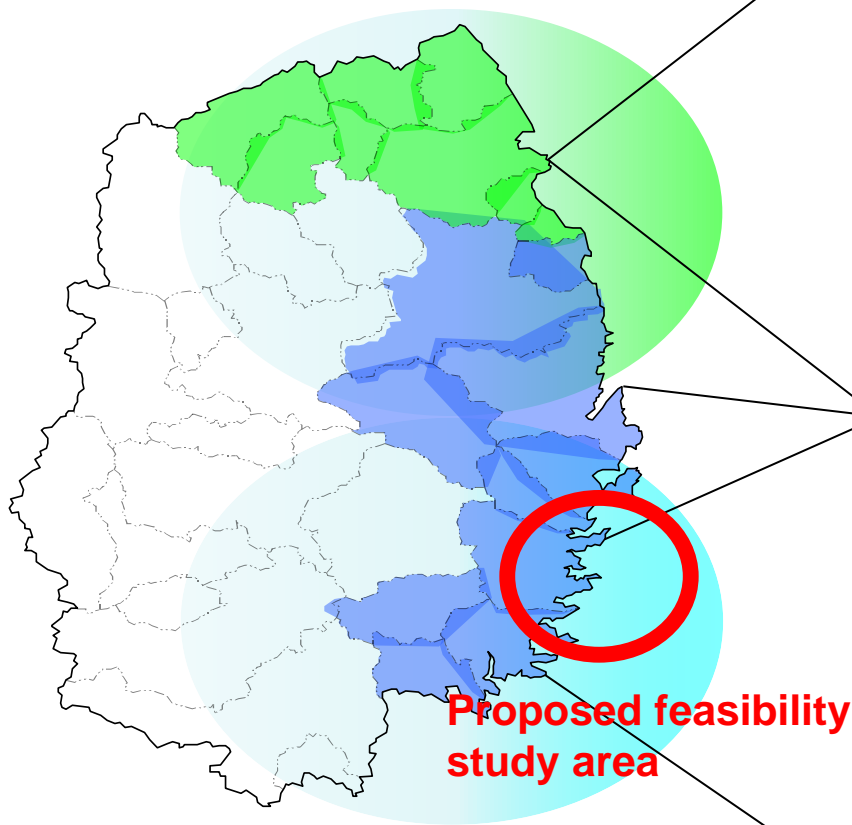


Source: JWPA

Wave power distribution around Japan (average data 1994-2004)



Source: NEDO



Wind energy



Off shore wind turbines

Wave energy



Wave energy converters

Deep oceanic environment



Floating wind turbines

# Aomori Prefecture

The hub of recyclable and clean energy

Mega solar park, December 2011



LNG terminal, March 2012





For more information;

CLAIR Sydney

TEL 02-9241-5033

FAX 02-9241-5014

Email [mailbox@jlgc.org.au](mailto:mailbox@jlgc.org.au)