



CLAIR Forum 2012

CLAIR



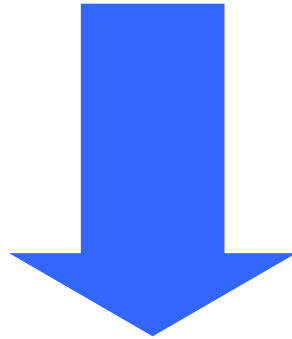
Japanese Local Government

Yasuhiko Tanabe

Director, CLAIR SYDNEY



**Japan Local Government Centre
(CLAIR Sydney)**



**Council of Local Authorities for
International Relations**

Tiers of Government

(JAPAN)

**Central
Government**

Local Government

**Prefectural
Government**

**Municipal
Government**
(City, Town & Village)

(AU)

Commonwealth

**State
Government**

**Local
Government**
(Council, Shire..)



Japanese Local Government is based on

- Constitution of Japan adopted in 1946, *Chapter 8 local autonomy*
- Local autonomy law

Prefectures (47)

- **Population varies from 590,000 to 13 million**
- **Incorporates wide area covering 15 to 179 municipalities**

Municipalities (1,742)

- **Cities (787), Tokyo's special wards (23), Towns (748) & Villages (184)**
- **Population varies from 170 to 3.6 million**



Amalgamation of Municipalities

Changes in numbers of municipalities

Year	No. of Municipalities
1953	9,868
1956	3,975
1999	3,232
2008	1,788 (as of 1 April)

Great amalgamation of
Showa Era

Great amalgamation of
Heisei Era

(excluding Tokyo's 23 special wards)

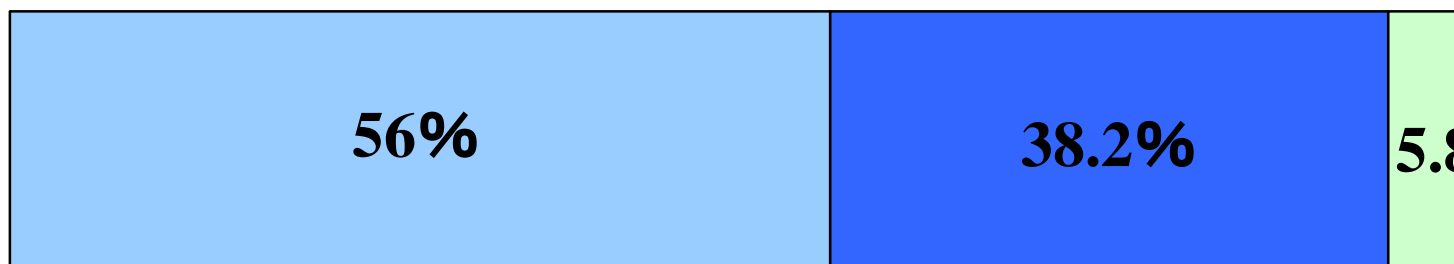
Municipalities (1,742)

- **Cities (787)** – more than 30,000 (population)
 - *Designated Cities – more than 700,000 (population)
 - *Core Cities – more than 300,000 (population)
 - *Special Cities – more than 200,000 (population)
- **Towns (748)**
- **Villages (184)**

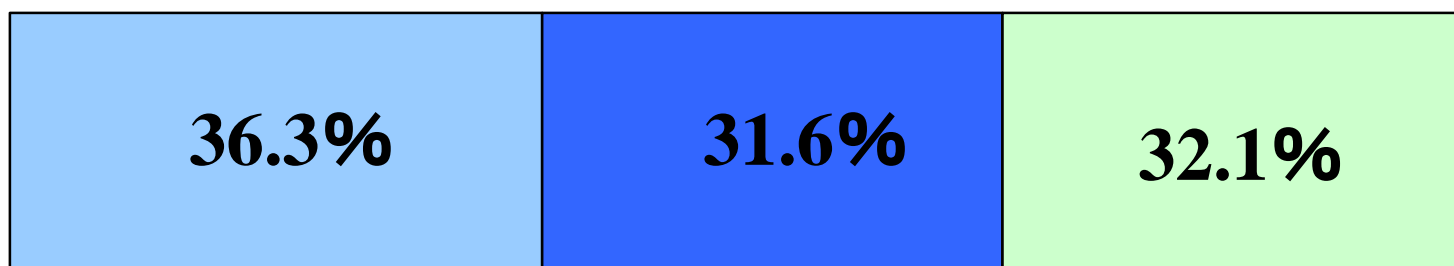


Local Public Finance – Expenditure

2008/09



446.1 billion
Dollars



150 trillion 306.2
billion Yen

- Commonwealth/Central Govt
- State Govt/Prefectures
- Local Govt/Municipalities



Local Public Finance – Revenue

2008/09



421.1 billion
Dollars

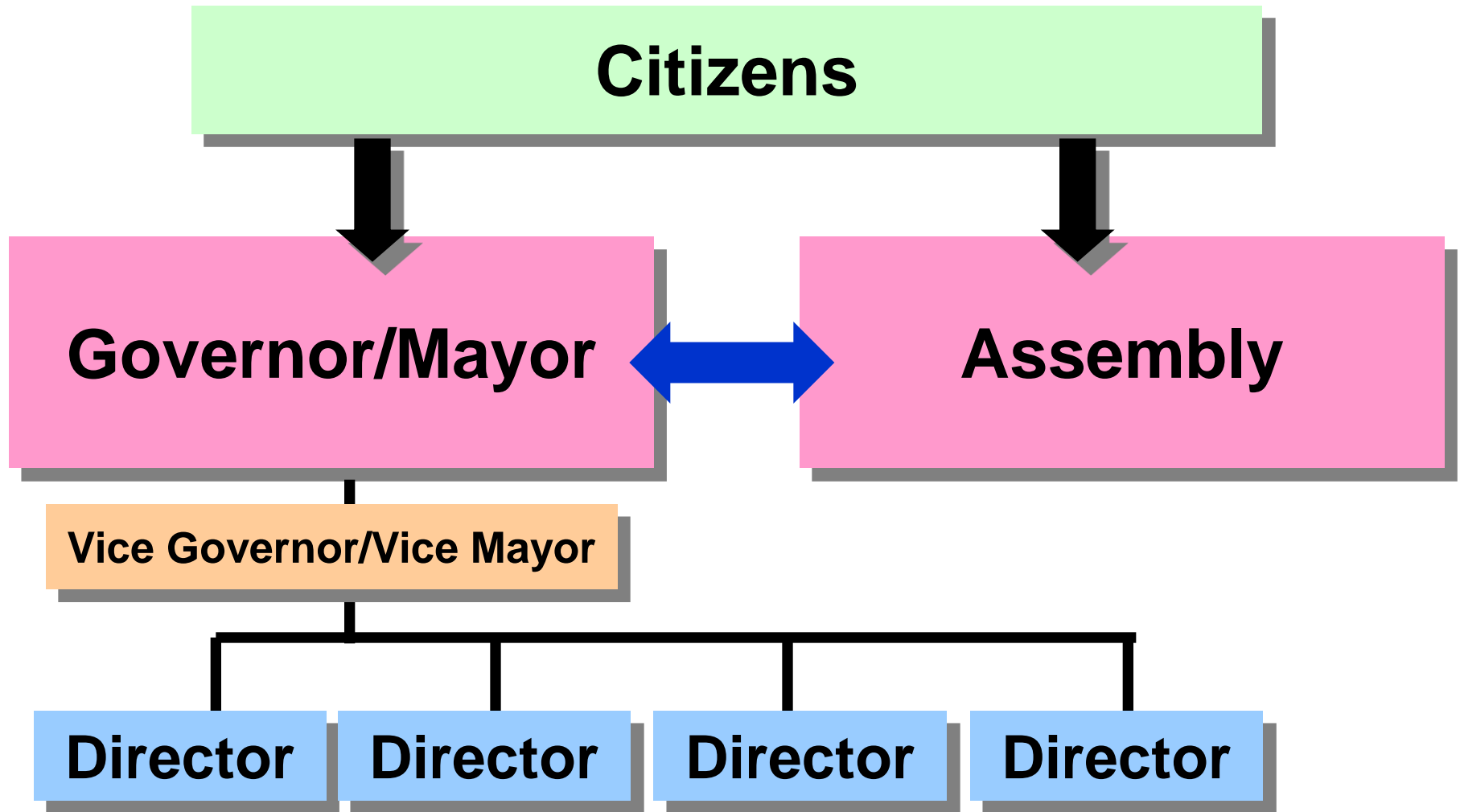


157 trillion 364.4
billion Yen

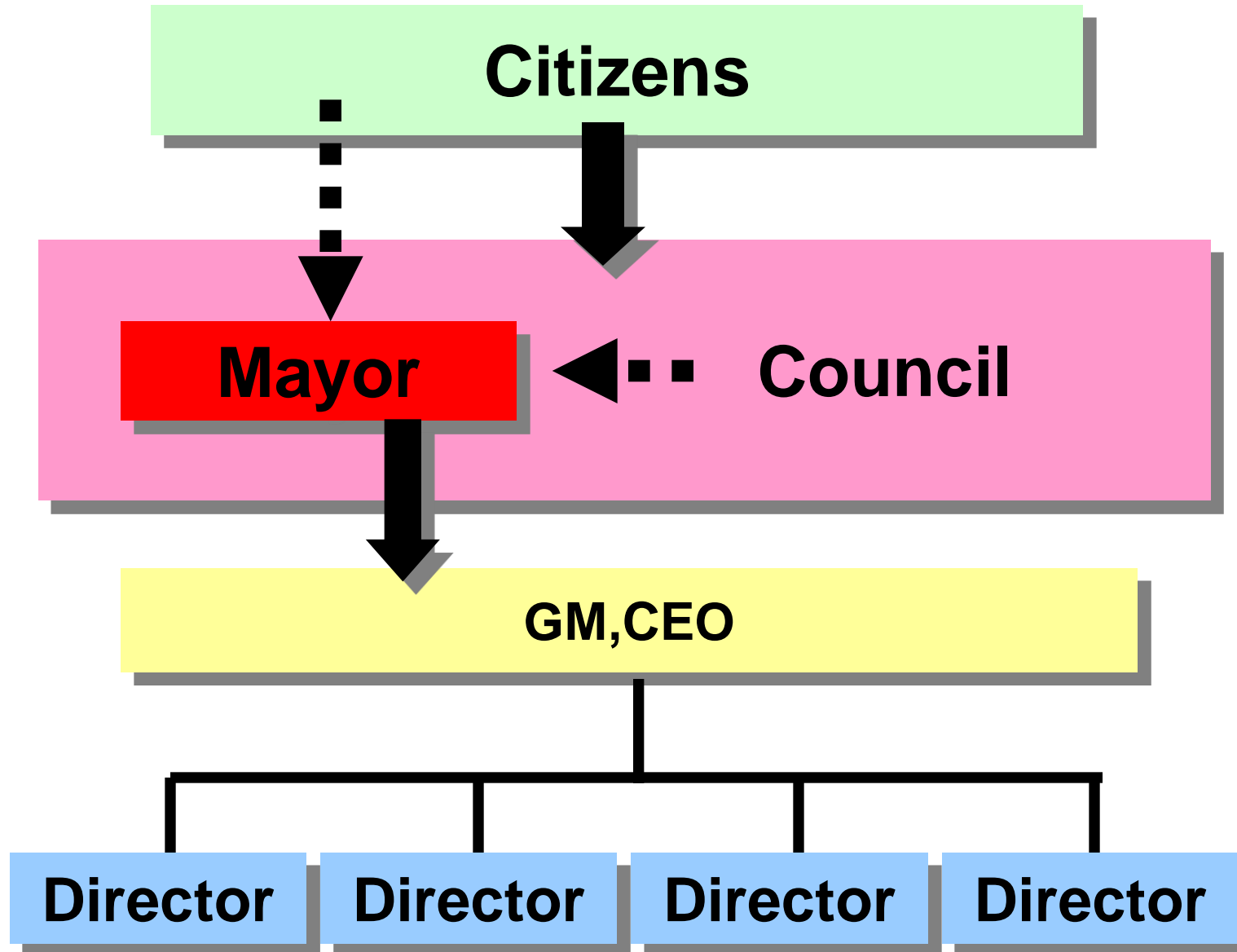
- Commonwealth/Central Govt
- State Govt/Prefectures
- Local Govt/Municipalities



Structure - Japan



Structure - Australia



Assembly → Legislative Power

- **Directly elected by the citizens (4-year term)**
- **Number of members**
 - Prefectures 35 to 127
 - Municipalities 6 to 86
- **Roles:**
 - Enactment of by-laws (local acts)
 - Approval of annual budget
 - Give assent to annual financial report
 - Give consent to top management appointments



Governor/Mayor → Executive Power

- **Directly elected by the citizens (4-year term)**
- **Roles:**
 - Represent the prefecture/municipality
 - Chief executive of the local government
 - Impose taxes and charges
 - Permit expenditures
 - Appoint personnel
 - Make contracts/agreements
 - Strategize long-term plans

Governor: Chief executive of prefecture

Mayor: Chief executive of municipality



Budget Making Process

- **Financial year**

April 1st – March 31st

- **August – October**

Review of previous budget

November – January

**Negotiation between finance division
and project divisions**



Budget Making Process

- February

 - *Making a draft budget

 - *Submitting to assembly

- February – March

 - Discussions by assembly

- March

 - Approval by assembly

 **Budget decided**

